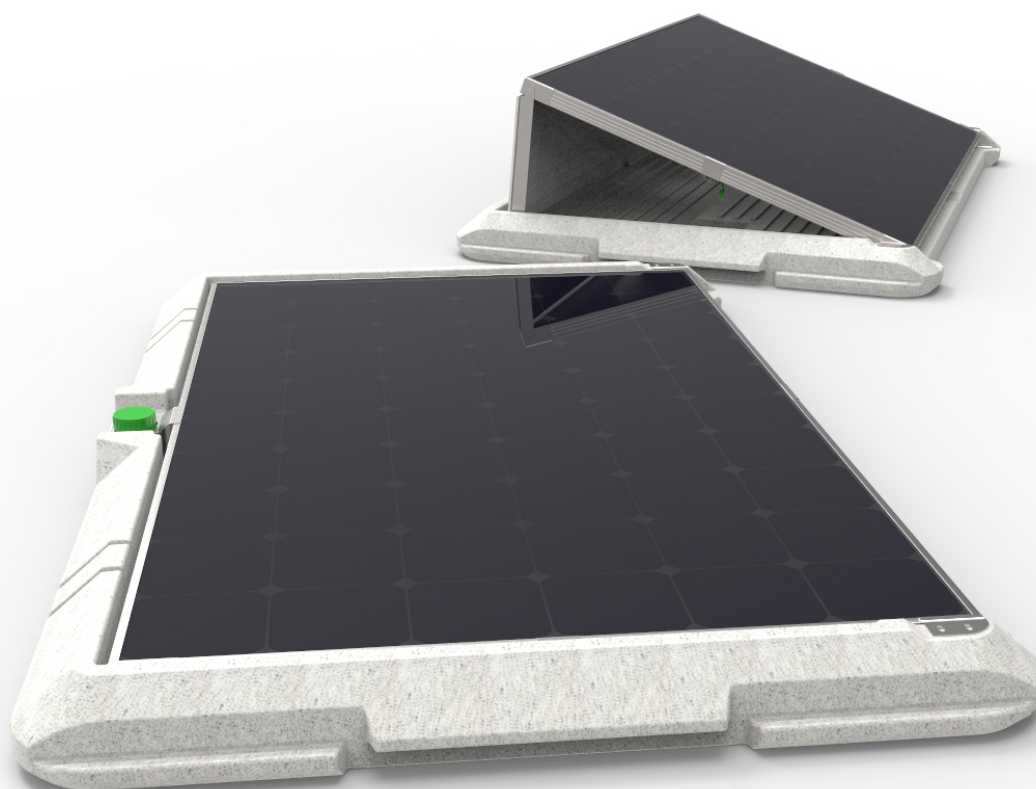


PRODUCT SPECIFICATIONS

supersola



Basic 270 / Premium 270 / Special 270

supersola

A revolutionary and patent pending plug & play design

Supersola uses only selected materials to ensure quality, durability, efficiency and sustainable performance. This allows you to generate clean electricity while at the same time reducing your electricity bill.

	Basic 270	Premium 270	Special 270
Peak Output Power	225W		
Operational Functionality	Grid connected (no island mode)		
Nominal Output Current	0,94 A		
Nominal Voltage	230 V		
Nominal Frequency	50,0 HZ		
Power Factor	>0,95		
Maximum Units per 16A dedicated Branch	13 (Ph + N)		
Night Time Power Consumption	50mW		
Dimensions	1,86 x 1,16 x 0,11 m in folded position 1,86 x 1,16 x 0,43 m in open position		
Weight empty	39,8 kg		
Weight including full ballast	Max 110 kg or 55 kg / m ²		
Solar Panel Angle	20°		
Solar Panel Color	Blue	Black	Black
Solar Panel Output	270W	270W	270W
Solar Panel Product Warranty	10yr	10yr	10yr
Solar Panel Power Warranty	80%after 25 yr	80%after 25 yr	80%after 25 yr
Solar Panel Hail Resistance	35mm @ 97km/h		
Operational Temperature	-15°C until +65°C		
Powersocket Certificates	ECBT8.E135070 / ECBT2.E135070		
Solar Panel Certificates	IEC61215/IEC61730/UL1703/IEC61701/IEC62716		
Inverter Certificates	AS4777, C10/11, CEI_0-21, EN50438, EN62109-1, EN62109-2, ERDF-NOI-RES_13E_V5, G59/2, G83/2, VDE-0126-1-1 + A1, VDE AR-N 4105		